



AD synchronisation



Active Directory synchronisation tool

SourceTech AD-sync enables synchronisation of user data between your company's AD (Active Directory) and SourceTech Tellus.

You will, by using the AD-sync, eliminate the need for double management. Users will be automatically created, updated and deleted from the Tellus database when a change is made in your Active Directory.

SourceTech Tellus AD-sync runs as a Windows Service application and is placed between the AD and Tellus. The AD-sync will continuously control

if there are any changes, this will be done via USN which are unique for every DC.

The AD-sync will be installed by a technician from your dealer and after this installation there will be no need for more technical administration of the application.



Functions

These functions are available in the AD-sync:

- Synchronisation of catalogue data
- Attribute mapping
- User templates
- Phone templates

Technical functions

The application needs TCP/IP connection to both Tellus and the Active Directory. The application can be installed on both a virtual machine and a real machine. You can also install the application on the same server as the Tellus server, but it is no demand.

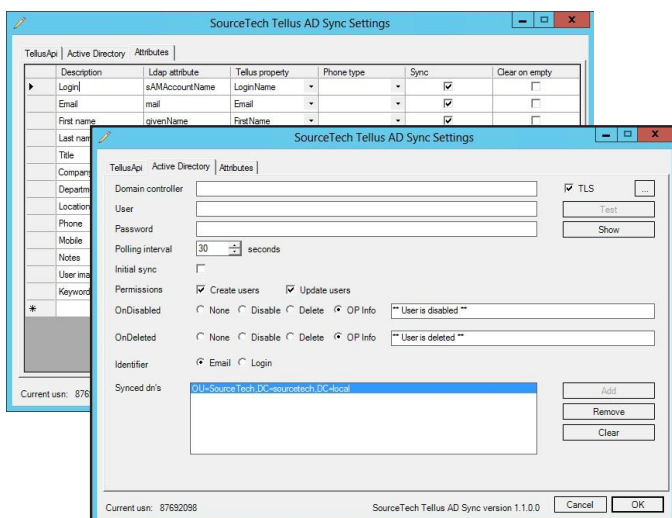
Interface

The interface is easy to use and very user friendly. The administrator logs in to the application with the same user name and password as in TellusWeb. You will only have to log in one time when you configure the application, it is then ready to be used.

The available attributes

The attribute mapping is very adaptive and the administrator will choose which attributes that will be synchronised. A standard range of attributes are defined but these can be changed. The administrator can easily map an existing LDAP/AD attribute to a pre defined Tellus attribute. The standard range are presented below:

Company
Country
Email
First name
Last name
Location
Login name
Manager
Operator info
Organization
Personal info
Extension
Mobile
Home
State
Street
Title
User Image
Zip cod



Specifications

Hardware

CPU:

Memory:

Disk:

Network:

Graphics:

Minimum

2 Cores

4 GB Ram

8GB available

Recommended

Not applicable

Prerequisites

Microsoft Windows Server
2012 – 2022

Can run in a virtual or
physical machine.

.NET Framework 4.7

Software

Tellus AD-sync

