



SourceTech Stream Deck User Manual

Copyright © SourceTech AB 2000-2020

The contents of this manual are protected by copyright law and may not be copied in whole or in part without the express permission of the publisher. Although great care has been taken to ensure the accuracy of all information in this manual, the publisher is not liable for any incorrect or missing information. We reserve the right to implement changes in the product.

Prerequisites

Operating System: Microsoft Windows 10
 MS .Net Framework: Minimum MS .NET Framework 4.6.1
 4059EE: Version 2.3 or higher

Contents

Prerequisites..... 2
 Getting Started 3
 Using the Stream Deck device with the operator client 8
 Stream deck layout 8
 Keyboard Mapping 9
 Audio keys..... 11
 4059EE Call handling keys 12
 Troubleshooting 14

Getting Started

Step 1 - Unpack the stream deck and connect the included USB cable to your pc.

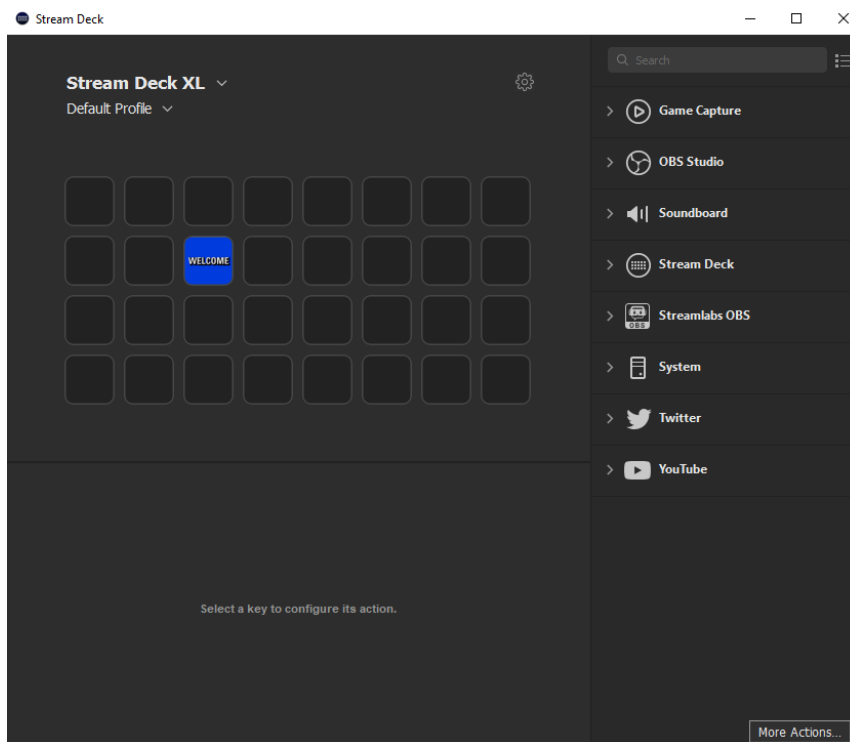
The Stream Deck should light on when connected to the PC and a Stream Deck logo will be displayed in the center.

Step 2 - Download Stream Deck app

For your Stream Deck to communicate with your device, it needs a software. You can download the Stream Deck App here: <https://www.elgato.com/en/gaming/downloads>

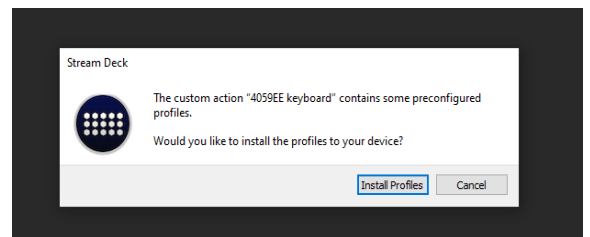
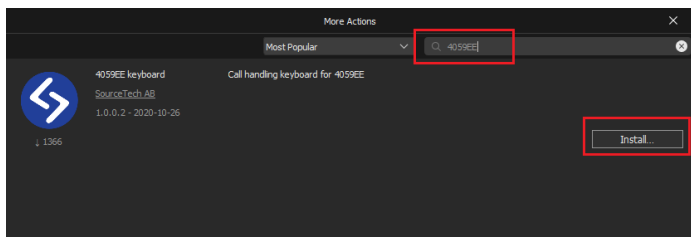
Step 3 – Open the app, click around and make sure it is running without hiccups.

The default Stream Deck app layout should look like this;



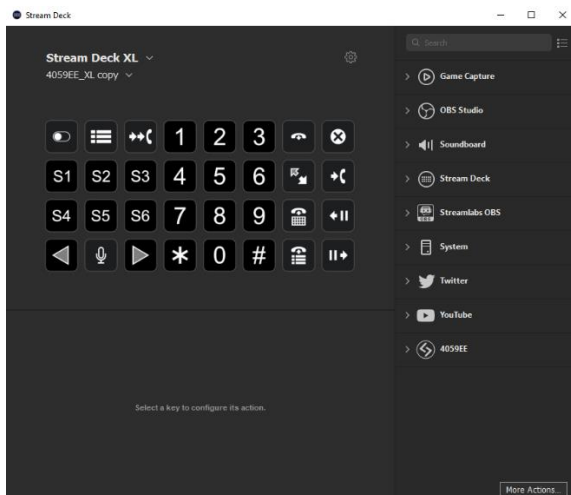
Step 4 – Install the 4059EE plugin from the Stream Deck plugin page.

Click the “More actions...” Button to open the plugin page. In the search field, search for 4059EE and press the install button.



A popup will appear asking if you want to install the 4059EE keyboard layout. Press ‘Install Profiles’.

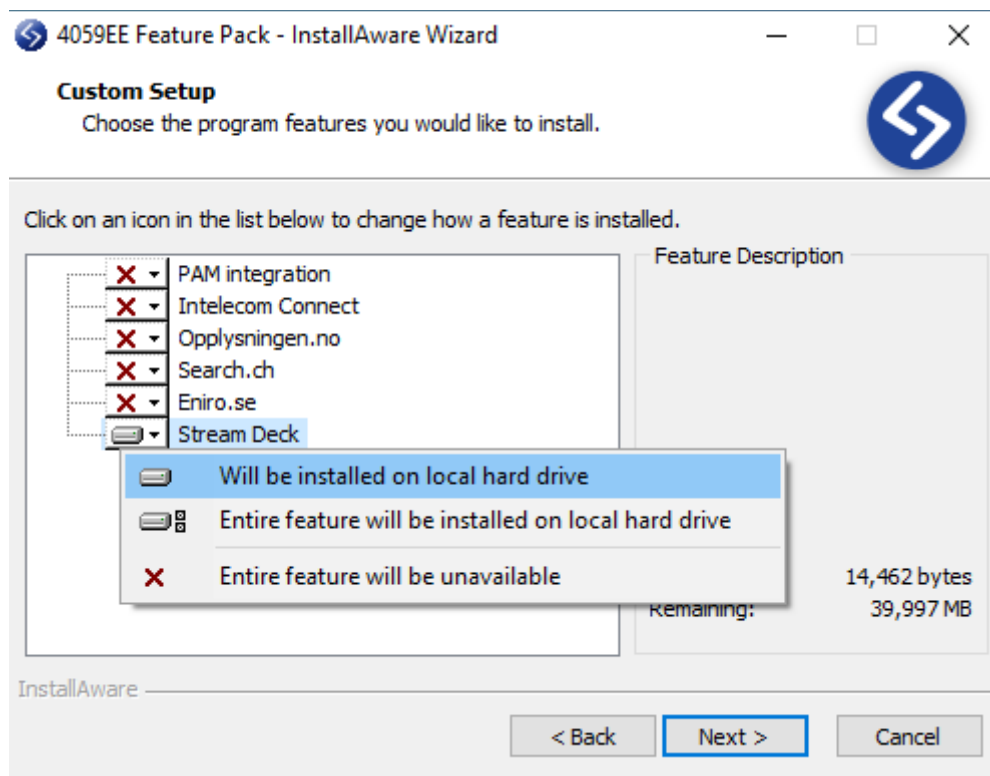
Going back to the main page, you can see that the keyboard layout is applied to both the Stream Deck app and on your Stream deck Device.



Step 5 – Install the 4059EE Feature pack.

In order to use the Stream Deck with 459EE, you need to download the Feature pack. You can find the Feature pack here: <https://sourcetech.se/Portal/Download>

Simply follow the installation and make sure to **check the Stream Deck Option**.



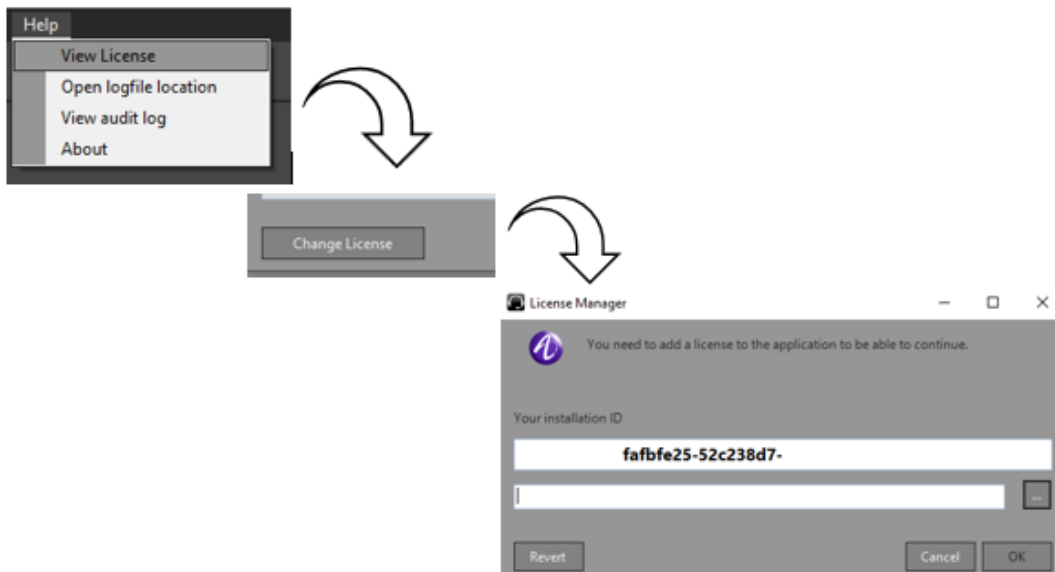
Step 6 – Install the 4059EE Stream deck License.

**Note that you need to run the application as an administrator to be able to see the system settings.*

Firstly, you need to get the 4059EE Operator Installation ID

You can find the 4059EE Operator Installation Id by going into;

Help -> About -> Change License



To download the license, go to the [SourceTech Spectra portal](http://SourceTech.se), search up the customer and generate a license with your 4049EE operator Installation ID.

Tellus feature pack for Alcatel 4059EE

Art No.	Name	Available	Delivered
301156	Feature Pack plugin - Stream Deck	100	✓

Generate Tellus Feature Pack license for 4059EE

Create new license

Create license for: **SourceTech Galantos**

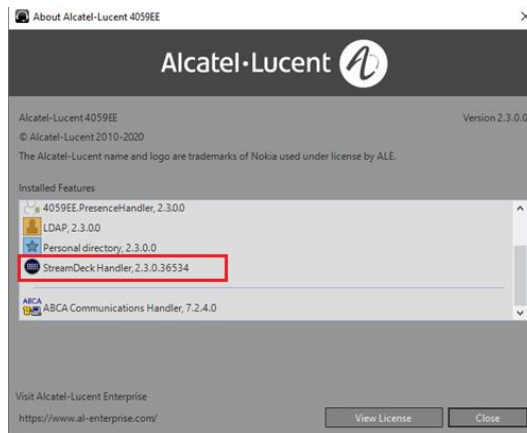
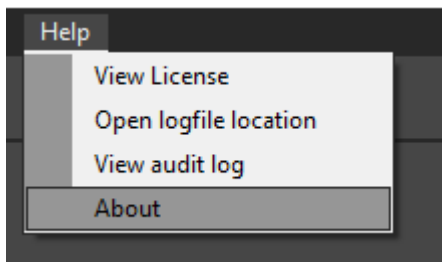
PC description:

Operator installation ID:

Generate operator license

SourceTech_Galant...licx

After uploading the License file, 4059EE will restart. After restart go ahead and double check that the license has been installed correctly



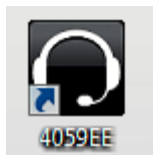
Step 7 – All done!

The Stream deck device should now talk to the 4059EE client, press a few buttons on the Device to try it out!

Using the Stream Deck device with the operator client

You can start the operator in one of the following ways:

From the desktop

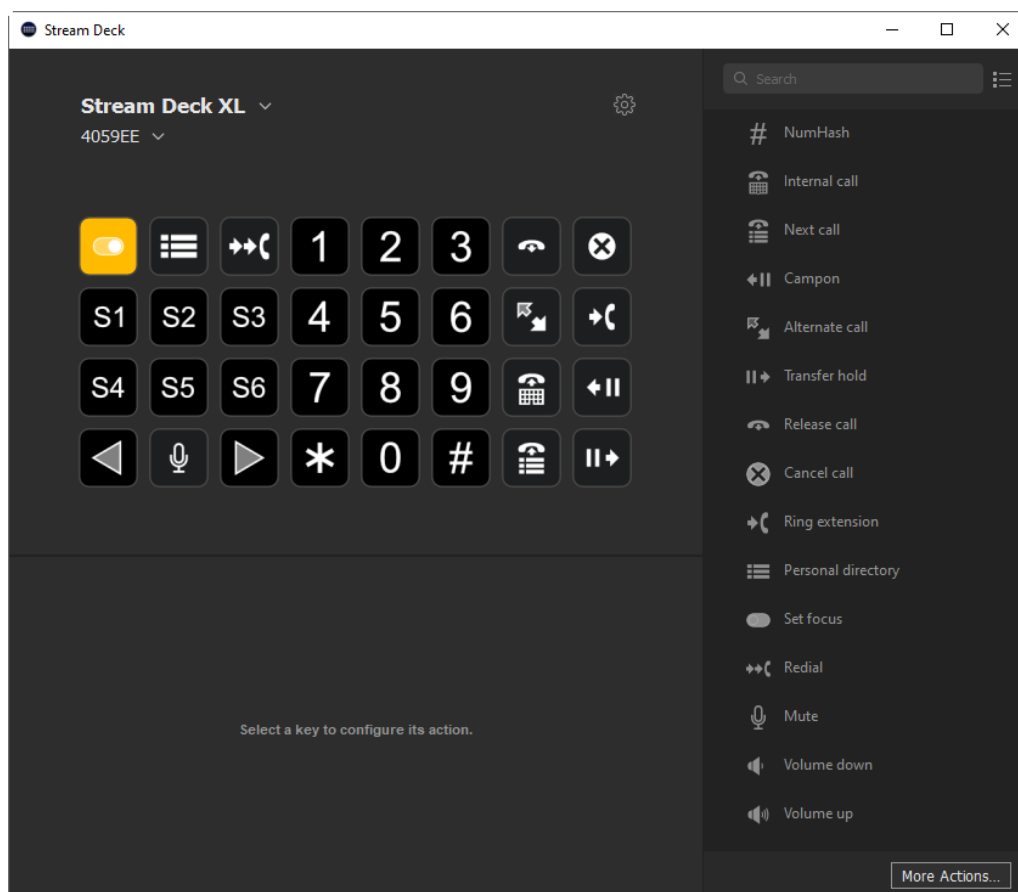


Double click the shortcut icon.

From the start menu



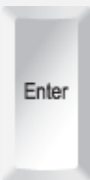






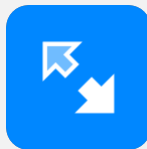

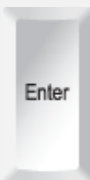





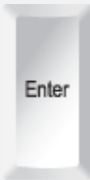

The application is found in the folder named 4059EE in the programs folder. To sign in click on the play button.













Stream deck layout








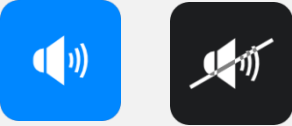


The 4059EE keyboard comes with a predefined profile, this is the layout shown in the Stream deck device. If another layout is preferred, the keys can be drag and dropped to wanted location in Stream deck control center.

Keyboard Mapping

Alcatel-Lucent's keyboard	Standard keyboard	Stream deck
  External Internal	 Enter	
Answer calls	Answer call with NUM Enter	Next call
		
End call with Release key	Release key	Release call
		
Alternate call key	Left right key	Alternate call
	 Enter	
Transfer/hold key	Transfer with numeric key	Transfer hold
		
Cancel inquiry (Cancel the call in the right window)	Cancel inquiry	Cancel call
	 Enter	
Make call key	Make call key is NUM Enter	Ring extension

		
Answer camped calls	Answer with ctr I+ Enter	
		
Redial key	Redial with shift + up	Redial
		
Operator switch over	Switch over with Paus break key	Set focus
		
Phone list / Call log	Scroll lock key	Personal directory

Audio keys

Alcatel-Lucent's keyboard	Standard keyboard	Stream deck
		
Handsfree Active / Inactive	Not mapped by default. Available in Keyboard shortcuts	Handsfree Active / Inactive
		
Muted / Not muted	Not mapped by default. Available in Keyboard shortcuts	Muted / Not muted
		
Loudspeaker Active / Inactive	N/A	Loudspeaker Active / Inactive
		
Volume Lower / Rise	Not mapped by default. Available in Keyboard shortcuts	Volume Lower / Rise

4059EE Call handling keys



Set focus



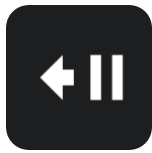
Redial



Cancel call



Ring extension



Campon



Transfer hold



S right



Handsfree



Volume down



Personal directory



Release call



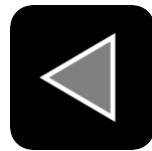
Alternate call



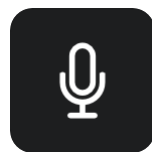
Internal call



Next call



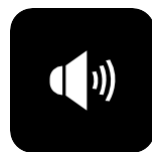
S left



Mute



Loudspeaker



Volume up



S-Keys



Numeric keys



Troubleshooting

If you are experiencing problems with the Stream Deck device not talking to the 459EE application even after everything is setup, make sure that the 4059EE client **is not running in admin mode**.